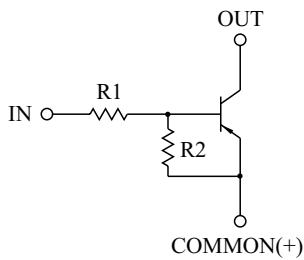


SWITCHING APPLICATION.
INTERFACE CIRCUIT AND DRIVER CIRCUIT APPLICATION.

FEATURES

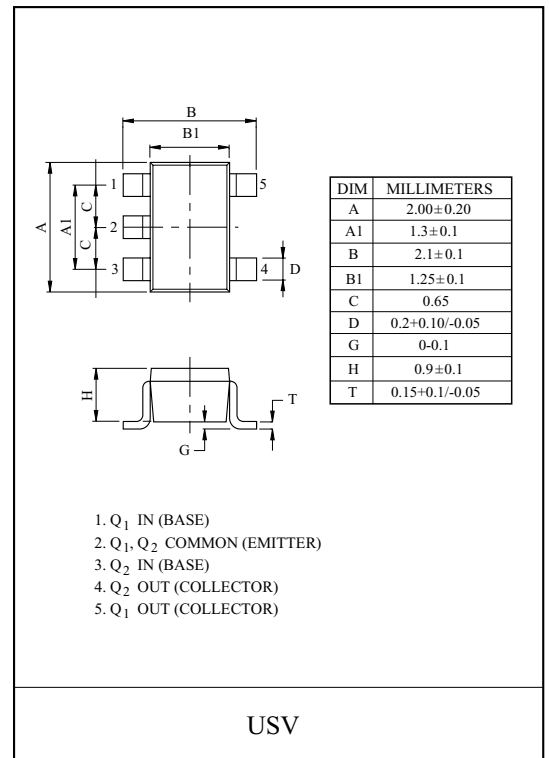
- With Built-in Bias Resistors.
- Simplify Circuit Design.
- Reduce a Quantity of Parts and Manufacturing Process.
- High Packing Density.

EQUIVALENT CIRCUIT

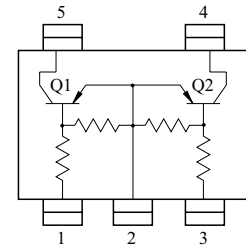


BIAS RESISTOR VALUES

TYPE NO.	R1(k)	R2(k)
KRA551U	4.7	4.7
KRA552U	10	10
KRA553U	22	22
KRA554U	47	47
KRA555U	2.2	47
KRA556U	4.7	47



EQUIVALENT CIRCUIT (TOP VIEW)



MAXIMUM RATING (Ta=25)

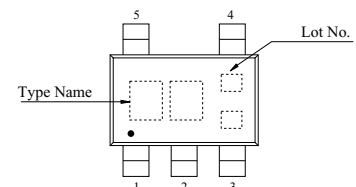
CHARACTERISTIC		SYMBOL	RATING	UNIT
Output Voltage	KRA551U 556U	V _O	-50	V
Input Voltage	KRA551U	V _I	-20, 10	V
	KRA552U		-30, 10	
	KRA553U		-40, 10	
	KRA554U		-40, 10	
	KRA555U		-12, 5	
	KRA556U		-20, 5	
Output Current	KRA551U 556U	I _O	-100	mA
Power Dissipation		P _D *	200	mW
Junction Temperature		T _j	-55~150	
Storage Temperature Range		T _{stg}	-55~150	

* Total Rating.

MARK SPEC

TYPE	KRA551U	KRA552U	KRA553U	KRA554U	KRA555U	KRA556U
MARK	PA	PB	PC	PD	PE	PF

Marking



KRA551U~KRA556U

ELECTRICAL CHARACTERISTICS (Ta=25 °C)

CHARACTERISTIC		SYMBOL	TEST CONDITION	MIN.	TYP.	MAX.	UNIT
Output Cut-off Current	KRA551U 556U	$I_{O(OFF)}$	$V_O=-50V, V_I=0$	-	-	-500	nA
DC Current Gain	KRA551U	G_I	$V_O=-5V, I_O=-10mA$	30	55	-	
	KRA552U			50	80	-	
	KRA553U			70	120	-	
	KRA554U			80	200	-	
	KRA555U			80	200	-	
	KRA556U			80	200	-	
Output Voltage	KRA551U 556U	$V_{O(ON)}$	$I_O=-10mA, I_I=-0.5mA$	-	-0.1	-0.3	V
Input Voltage (ON)	KRA551U	$V_{I(ON)}$	$V_O=-0.2V, I_O=-5mA$	-	-1.5	-2.0	V
	KRA552U			-	-1.8	-2.4	
	KRA553U			-	-2.1	-3.0	
	KRA554U			-	-2.8	-5.0	
	KRA555U			-	-0.8	-1.1	
	KRA556U			-	-0.9	-1.3	
Input Voltage (OFF)	KRA551U 554U	$V_{I(OFF)}$	$V_O=-5V, I_O=-0.1mA$	-1.0	-1.2	-	V
	KRA555U 556U			-0.5	-0.65	-	
Transition Frequency	KRA551U 556U	f_T^*	$V_O=-10V, I_O=-5mA$	-	200	-	MHz
Input Current	KRA551U	I_I	$V_I=-5V$	-	-	-1.8	mA
	KRA552U			-	-	-0.88	
	KRA553U			-	-	-0.36	
	KRA554U			-	-	-0.18	
	KRA555U			-	-	-3.6	
	KRA556U			-	-	-1.8	
Input Resistor	KRA551U	R1	-	3.29	4.7	6.11	k
	KRA552U			7	10	13	
	KRA553U			15.4	22	28.6	
	KRA554U			32.9	47	61.1	
	KRA555U			1.54	2.2	2.86	
	KRA556U			3.29	4.7	6.11	
Resistor Ratio	KRA551U 554U	R2/R1	-	0.8	1.0	1.2	
	KRA555U			17	21	26	
	KRA556U			8	10	12	

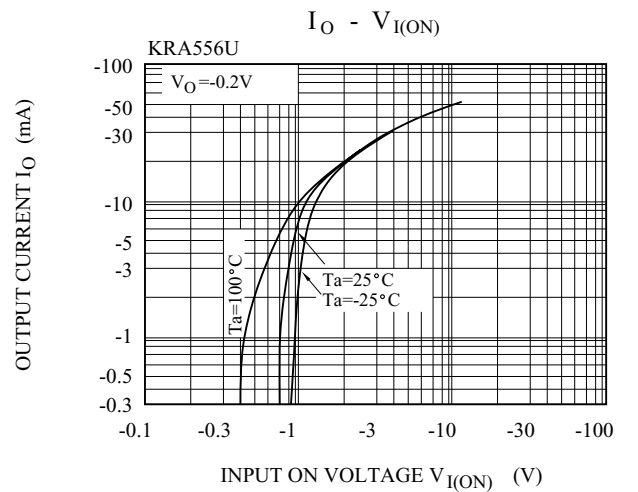
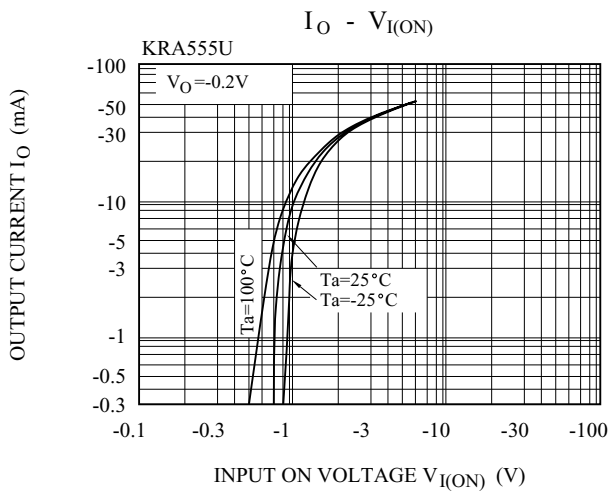
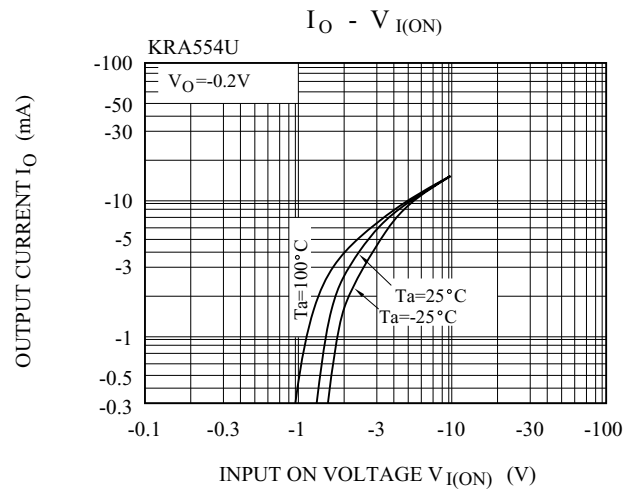
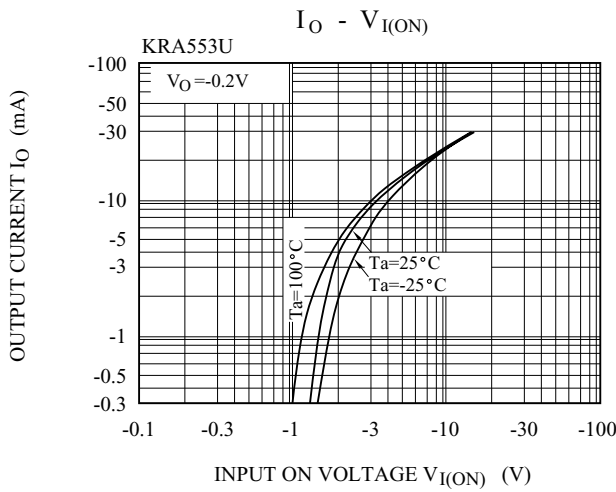
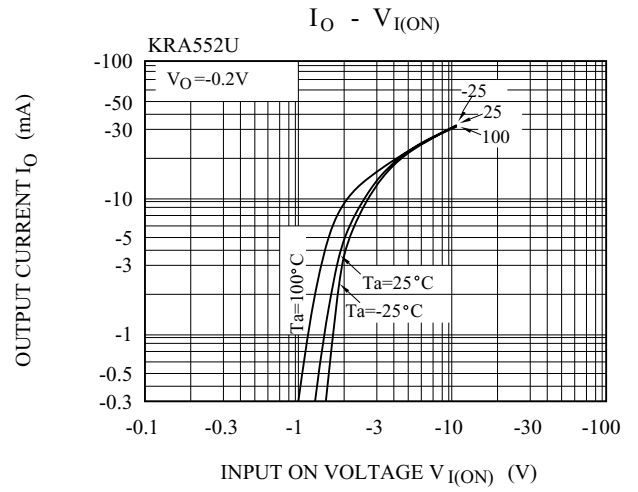
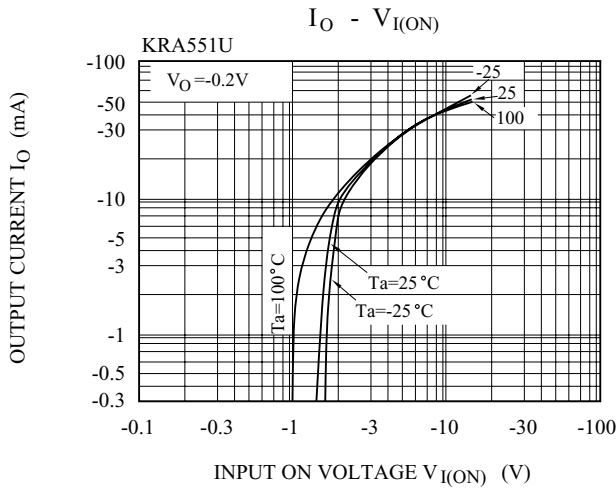
Note : * Characteristic of Transistor Only.

KRA551U~KRA556U

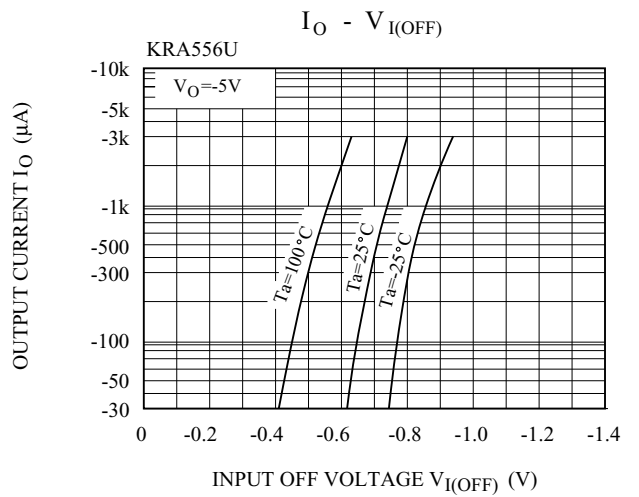
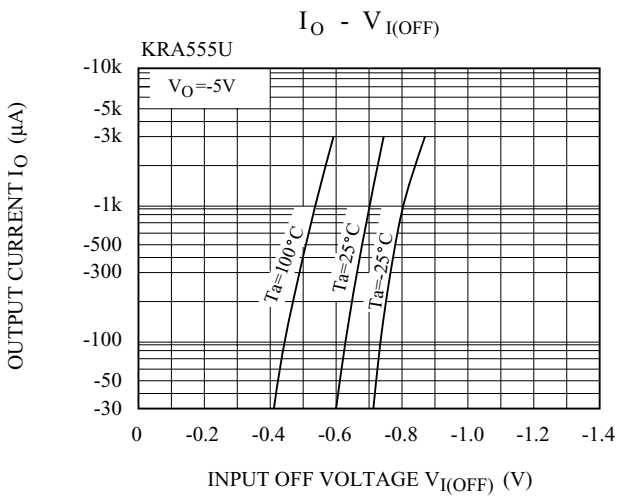
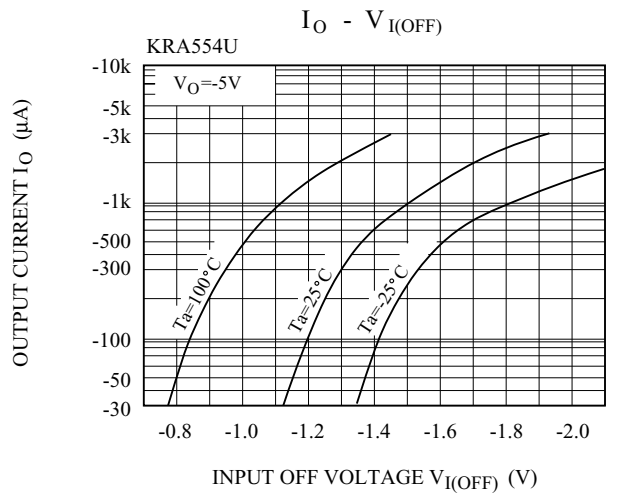
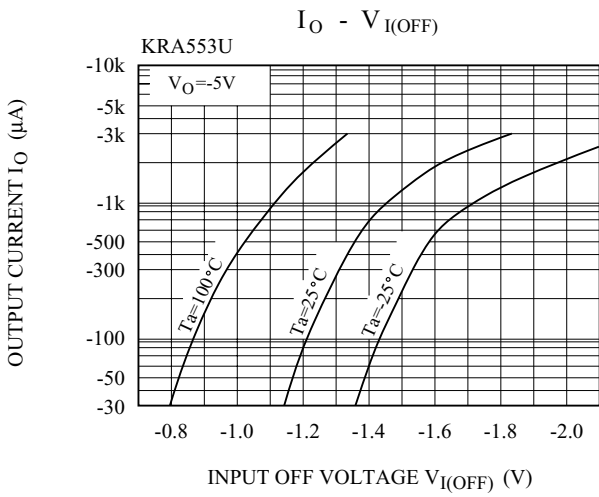
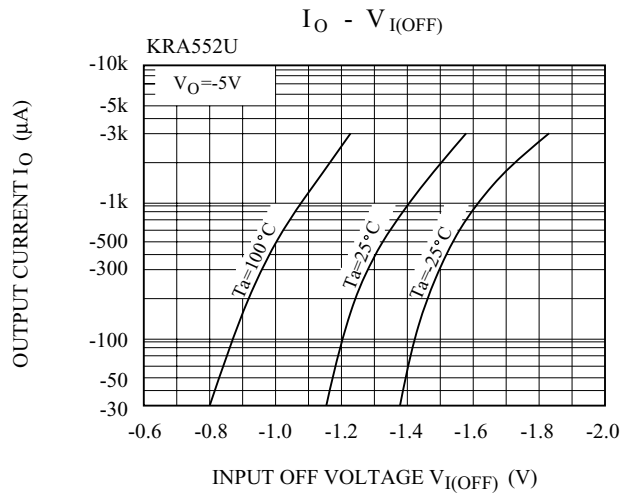
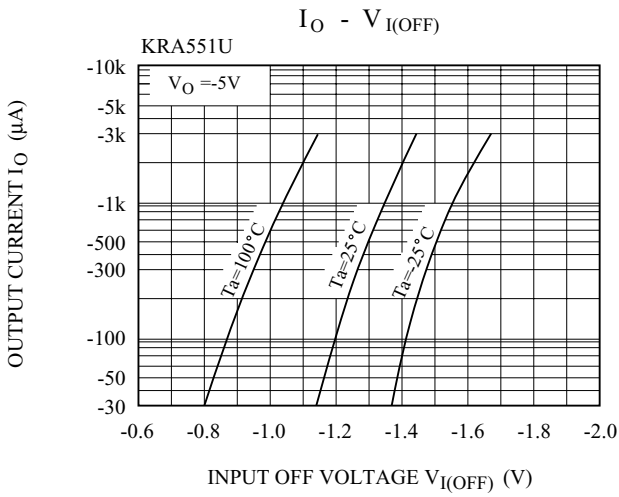
ELECTRICAL CHARACTERISTICS (Ta=25)

CHARACTERISTIC		SYMBOL	TEST CONDITION	MIN.	TYP.	MAX.	UNIT
Switching Time	Rise Time	KRA551U	$V_O = -5V$ $V_{IN} = -5V$ $R_L = 1k$	-	0.07	-	μs
		KRA552U		-	0.06	-	
		KRA553U		-	0.2	-	
		KRA554U		-	0.24	-	
		KRA555U		-	0.02	-	
		KRA556U		-	0.07	-	
	Storage Time	KRA551U		-	1.1	-	
		KRA552U		-	1.1	-	
		KRA553U		-	1.1	-	
		KRA554U		-	1.1	-	
		KRA555U		-	1.1	-	
		KRA556U		-	1.1	-	
	Fall Time	KRA551U		-	0.15	-	
		KRA552U		-	0.24	-	
		KRA553U		-	0.38	-	
		KRA554U		-	0.63	-	
		KRA555U		-	0.1	-	
		KRA556U		-	0.2	-	

KRA551U~KRA556U



KRA551U~KRA556U



KRA551U~KRA556U

